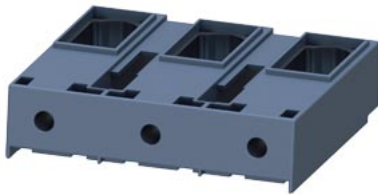


Box terminal for contactor 3RT1054 size S6 Max. connection approx. 70 mm²








product brand name	SIRIUS
product designation	Box terminal block
design of the product	up to 70 mm ² , can be used for 3UF71.3-1BA00-0 or 3RW443.
Substance Prohibittance (Date)	07/01/2006

Connections/ Terminals

type of connectable conductor cross-sections <ul style="list-style-type: none"> • for main contacts <ul style="list-style-type: none"> — solid or stranded — finely stranded with core end processing • at AWG cables for main contacts 	max. 1x 50, 1x 70 mm ² max. 1x 50, 1x 70 mm ² 2x 1/0
---	--


Certificates/ approvals

General Product Approval	EMC	Declaration of Conformity			
Confirmation					

Test Certificates **Marine / Shipping**

Type Test Certificates/Test Report	Special Test Certificate				
--	--	---	---	---	---

Marine / Shipping **other** **Railway**

	Confirmation	Miscellaneous	Special Test Certificate
---	------------------------------	-------------------------------	--

Further information

Information- and Downloadcenter (Catalogs, Brochures,...)
<https://www.siemens.com/ic10>
 Industry Mall (Online ordering system)
<https://mall.industry.siemens.com/mall/en/en/Catalog/product?mfb=3RT1955-4G>
 Cax online generator

<http://support.automation.siemens.com/WW/CAXorder/default.aspx?lang=en&mlfb=3RT1955-4G>

Service&Support (Manuals, Certificates, Characteristics, FAQs,...)

<https://support.industry.siemens.com/cs/ww/en/ps/3RT1955-4G>

Image database (product images, 2D dimension drawings, 3D models, device circuit diagrams, EPLAN macros, ...)

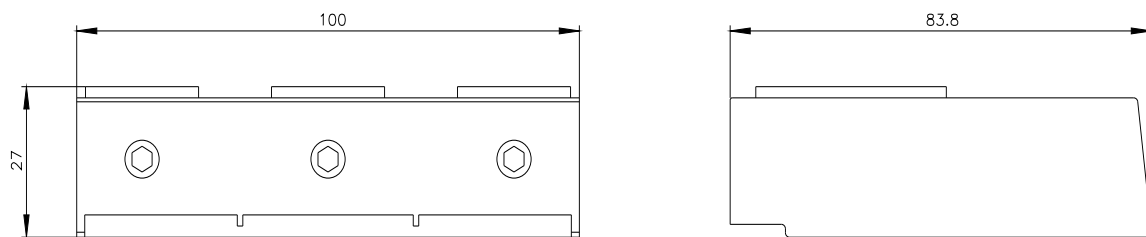
http://www.automation.siemens.com/bilddb/cax_de.aspx?mlfb=3RT1955-4G&lang=en

Characteristic: Tripping characteristics, I^t, Let-through current

<https://support.industry.siemens.com/cs/ww/en/ps/3RT1955-4G/char>

Further characteristics (e.g. electrical endurance, switching frequency)

<http://www.automation.siemens.com/bilddb/index.aspx?view=Search&mlfb=3RT1955-4G&objecttype=14&gridview=view1>



last modified:

3/4/2022 