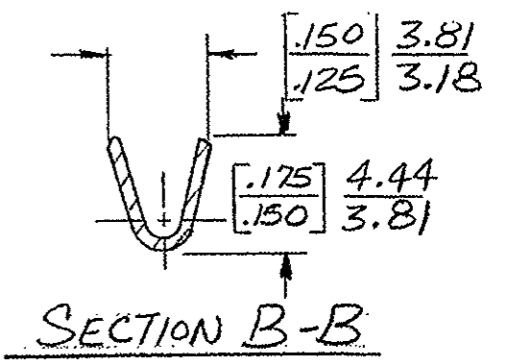
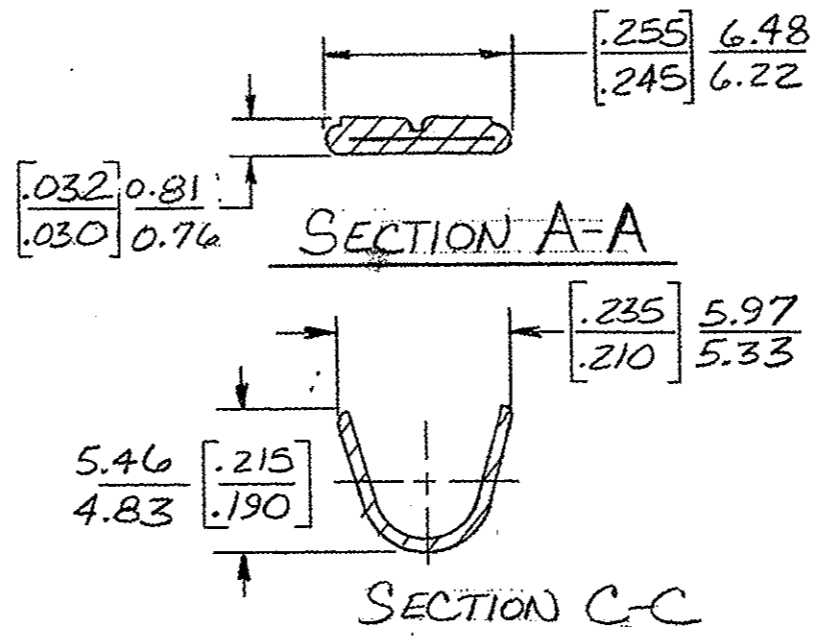
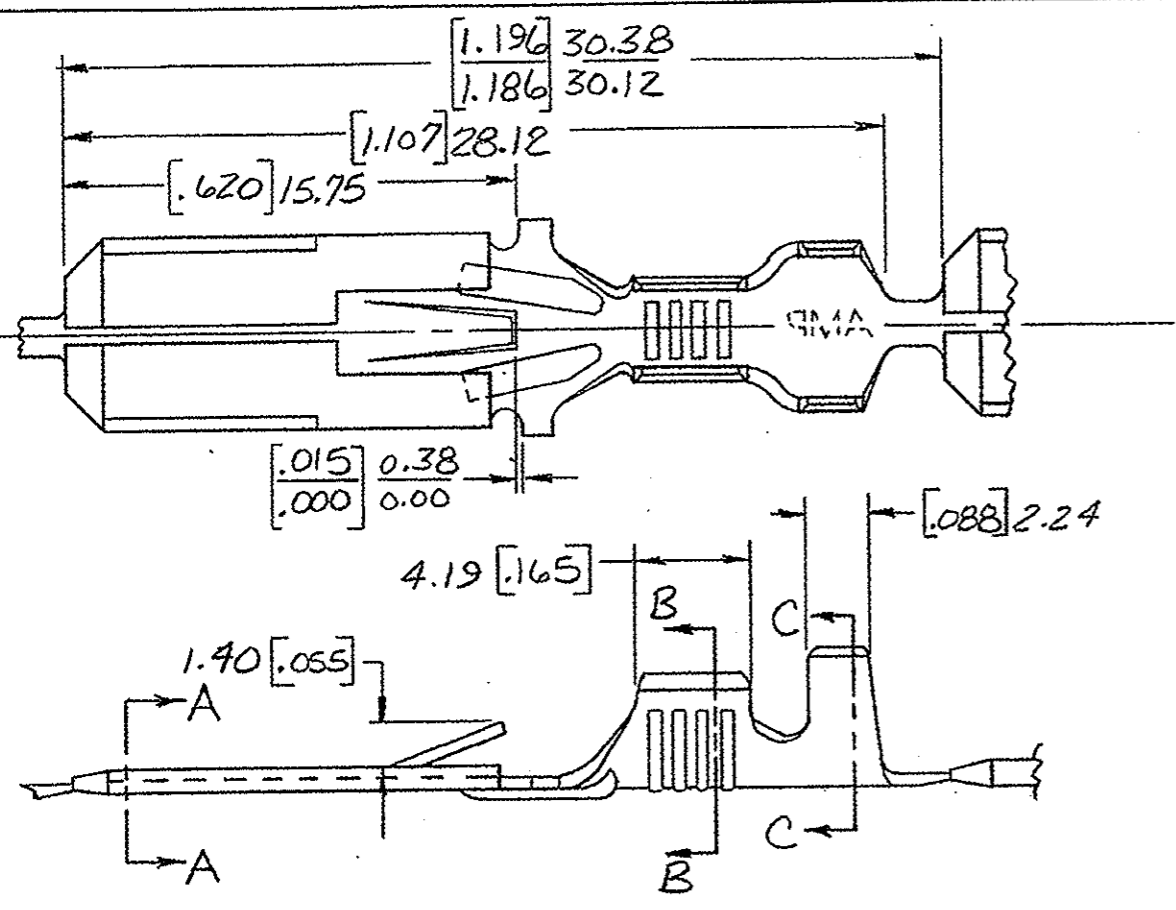


		1		LOC AF	DIST 30
REVISIONS					
P	F	ZONE	LTR	DESCRIPTION	DATE APPROVED
		DG2		REVISED PER ECO-11-005140	01APR11 HMR



3	4	TIN	[.0150] 0.38 BRASS	[.120-.160] 3.05-4.06	18-14	0.8-2mm²	42098-8
3	5	OBSOLETE	TIN	[.0150] 0.38 PHOS. BRZ.	[.120-.160] 3.05-4.06	18-14	0.8-2mm²
3	5	OBSOLETE	PRE-TIN	[.0150] 0.38 BRASS	[.120-.160] 3.05-4.06	18-14	0.8-2mm²
3	5	OBSOLETE	NONE	[.0150] 0.38 PHOS. BRZ.	[.120-.160] 3.05-4.06	18-14	0.8-2mm²
3	5	OBSOLETE	NICKEL	[.015] 0.38 PHOS. BRZ.	[.120-.160] 3.05-4.06	18-14	0.8-2mm²
3		SILVER	[.0150] 0.38 BRASS	[.120-.160] 3.05-4.06	18-14	0.8-2mm ²	42098-3
3		PRE-TIN	[.0150] 0.38 BRASS	[.120-.160] 3.05-4.06	18-14	0.8-2mm ²	42098-2
3		NONE	[.0150] 0.38 BRASS	[.120-.160] 3.05-4.06	18-14	0.8-2mm ²	42098-1
		FINISH	MATERIAL	INSULATION RANGE	WIRE SIZE		PART NO

- 1 - DIM'S. IN BRACKETS ARE IN INCHES.
- 2 - CONTINUOUS STRIP ON REELS.
- 3 - FOREIGN PRODUCTION ONLY
- 4 - PAPER INTERLAY BETWEEN LAYERS
- 5 - OBSOLETE PARTS: OBSOLETE CIS STREAMLINING PER D.RENAUD/D.SINISI

METRIC

UNLESS OTHERWISE SPECIFIED DIMENSIONS ARE IN INCHES. TOLERANCES ON: DECIMALS [±.015] 0.38 ANGLES	CONTRACT NO	TE Connectivity
	DR <i>NR Rector</i> 2-25-83	
MATERIAL	CHK <i>G. Yetter</i> 3-1-83	NAME 250 SERIES FASTIN-FASTON TAB
	APPR <i>J. Liberman</i> 4/22/83	
FINISH	APPR <i>S. K. Anderson</i> 4/20/83	SIZE B
	DSGN APPD	FSCM NO 00779
	OTHER APPD	DRAWING NO 42098
		SCALE <i>#</i>
		SHEET

CUSTOMER DRAWING