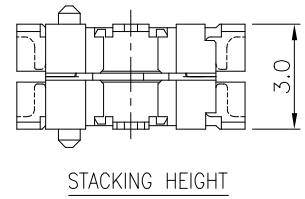
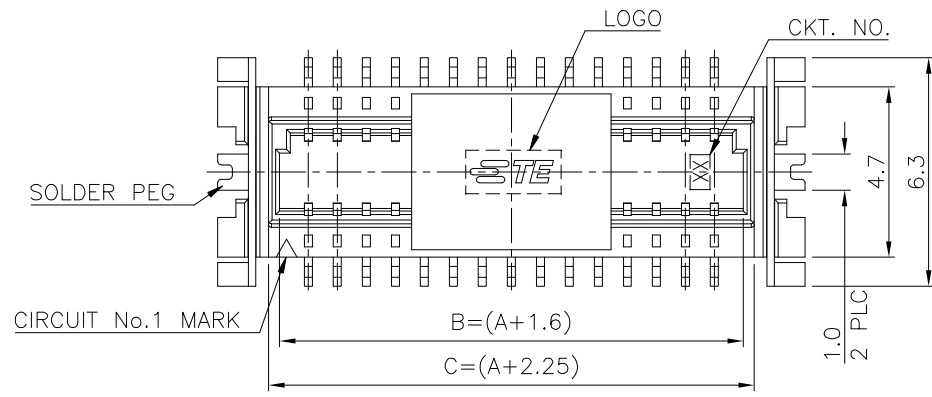


REVISIONS					
P	LTR	DESCRIPTION	DATE	DWN	APVD
G1		ECR-19-013959	06SEP2019	A.L	H.L



- NOTES:
- MATERIAL:
 - HOUSING: PA6T, UL94V-0; COLOR: NATURAL.
 - CONTACTS: PHOSPHOR BRONZE.
 - PEGS: BRASS.
 - FINISH:

CONTACTS: (SEE TABLE)

PLATING B : GOLD FLASH ON ENTIRE CONTACT.

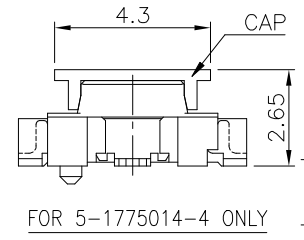
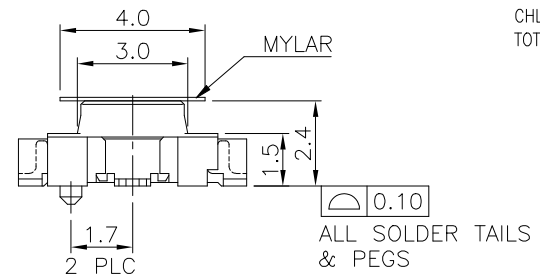
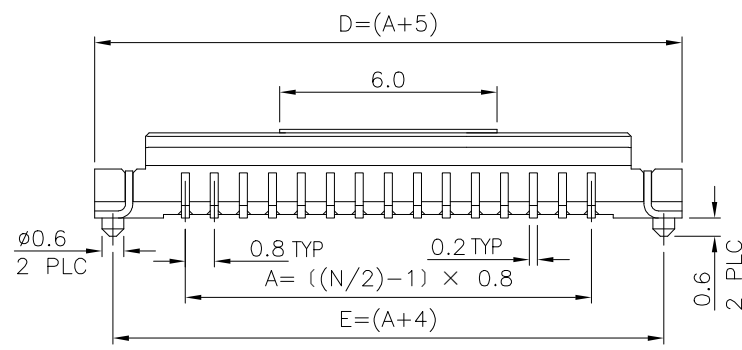
PLATING C : 100μ" MIN. MATTE-TIN ON ENTIRE CONTACT. (WITH ENTIRE CONTACT UNDERPLATED 50μ" MIN. NICKEL.)

PEGS: 100μ" MIN. TIN OR MATTE-TIN OVER 50μ" MIN. NICKEL.
 - PART NUMBER OF MATING RECEPTACLE: X-1775013-X
 - REFLOW SOLDER CAPABLE TO 260°C AS PER TEC-109-201, CONDITION B.
 - SUBSTANCE RESTRICTIONS FOR LOW HALOGEN (BY WEIGHT):

BROMINE (Br) ≤ 900 PPM (0.09%)

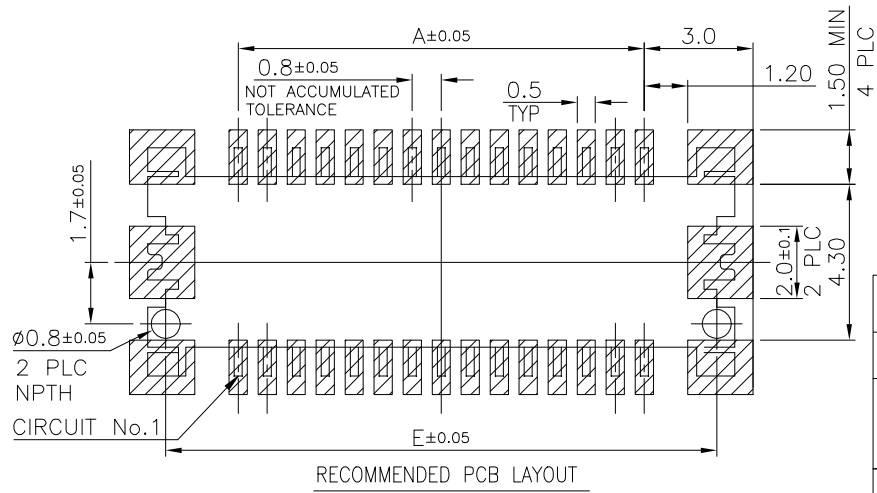
CHLORINE (Cl) ≤ 900 PPM (0.09%)

TOTAL CONCENTRATION OF (Cl) + (Br) ≤ 1500 PPM (0.15%)



(1775014-1 & 5-1775014-4 ARE OBSOLETED)

CAP OR MYLAR	CONTACT PLATING	DIMENSIONS					NO. OF CONTACTS	PART NUMBER
		E	D	C	B	A		
CAP	C	8	9	6.25	5.6	4.0	12	5-1775014-4
MYLAR	B	12.8	13.8	11.05	10.4	8.8	24	1775014-2
		8	9	6.25	5.6	4.0	12	1775014-1

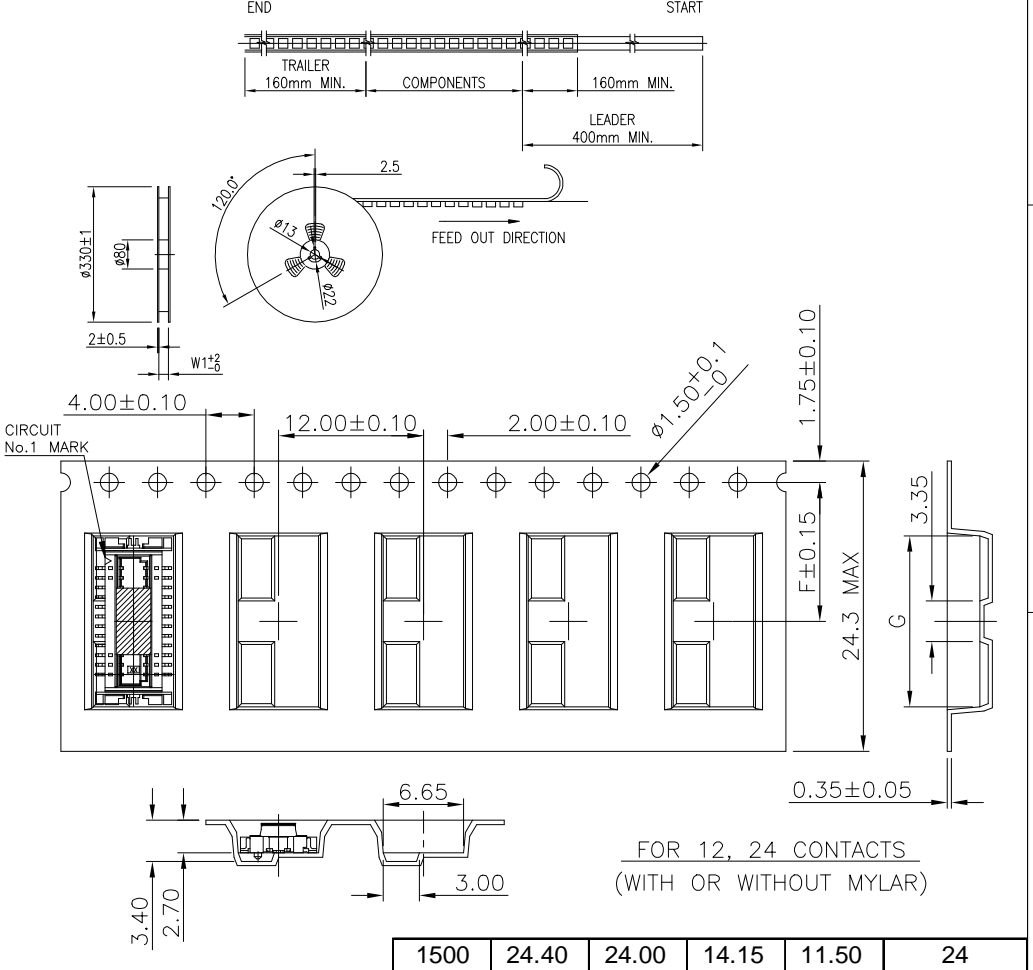
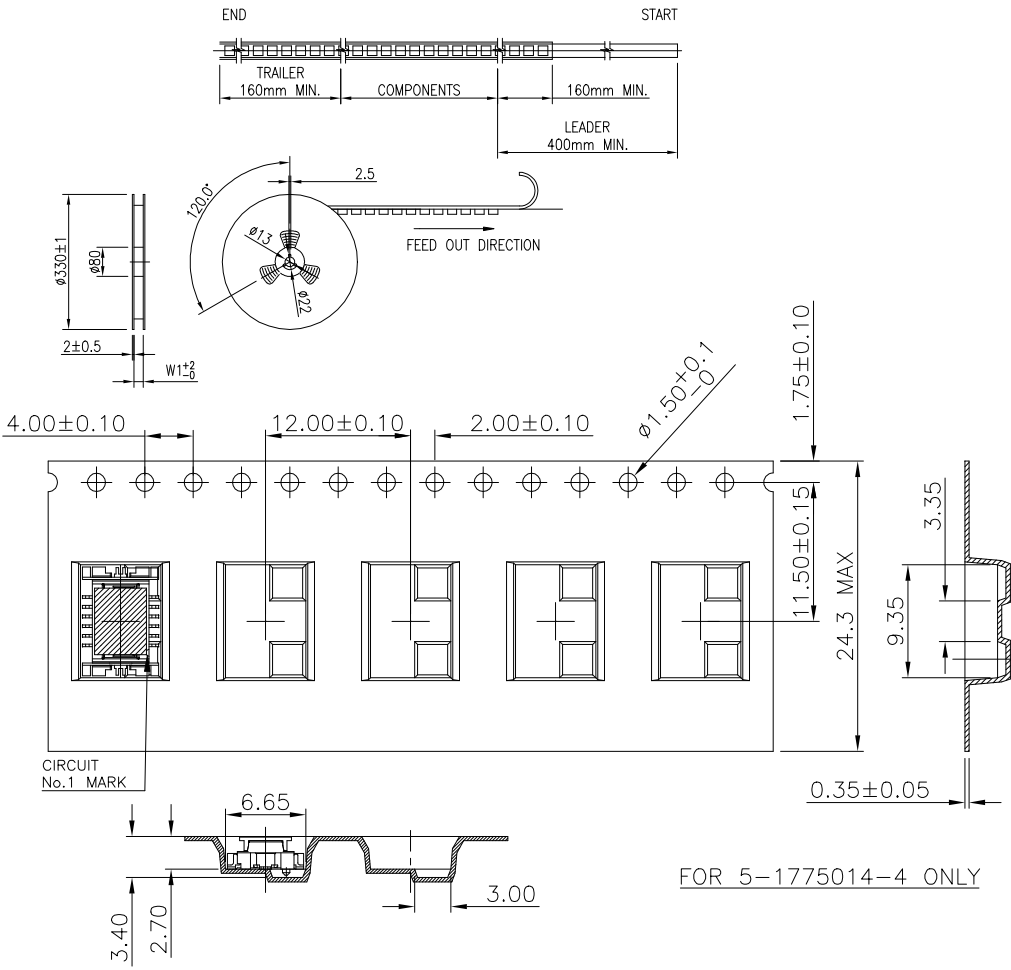


THIS DRAWING IS A CONTROLLED DOCUMENT.

DIMENSIONS: mm	TOLERANCES UNLESS OTHERWISE SPECIFIED:	DWN A. WU 05FEB2013	TE Connectivity BOARD-TO-BOARD CONNECTOR, 0.8mm PITCH, FINE-STACK 3H. PLUG
	0 PLC ± -	CHK S. CHIEN 05FEB2013	
	1 PLC ± 0.3	APVD W. KODAMA 05FEB2013	
	2 PLC ± 0.2	NAME	
MATERIAL	FINISH	PRODUCT SPEC 108-57488	SIZE CAGE CODE DRAWING NO RESTRICTED TO
		APPLICATION SPEC	A3 00779 C=1775014
		WEIGHT 0	SCALE 7:1 SHEET 1 OF 2 REV G1
		CUSTOMER DRAWING	

THIS DRAWING IS UNPUBLISHED. RELEASED FOR PUBLICATION
 © COPYRIGHT - By - ALL RIGHTS RESERVED.

REVISIONS					
P	LTR	DESCRIPTION	DATE	DWN	APVD
-	-	SEE SHEET 1	-	-	-



- NOTES:
- MATERIAL:
 BOX: FIBREBOARD, CORRUGATED, DOUBLE WALL.
 COVER TAPE: PET, TRANSPARENT COLOR.
 CARRIER TAPE: POLYSTYRENES, BLACK COLOR.
 REEL: PAPER, BROWN COLOR.
 BAG: POLYETHYLENES, TRANSPARENT COLOR.
 - EACH BAG SHALL BE INCLUDED DESICCANT.
 - PEELING STRENGTH: 0.1~1.3 N (10~130 GRAMS).
 - PEELING SPEED: 300 mm/min.

1500	24.40	24.00	14.15	11.50	24
1500	24.40	24.00	9.35	11.50	12
PCS / TAPE	W1	W	G	F	NO. OF CONTACTS
DIMENSIONS					

THIS DRAWING IS A CONTROLLED DOCUMENT.

DIMENSIONS: mm	TOLERANCES UNLESS OTHERWISE SPECIFIED:	DWN A. WU 05FEB2013	TE Connectivity BOARD-TO-BOARD CONNECTOR, 0.8mm PITCH, FINE-STACK 3H. PLUG
	0 PLC ± -	CHK S. CHIEN 05FEB2013	
	1 PLC ± 0.3	APVD W. KODAMA 05FEB2013	
	2 PLC ± 0.2	NAME 108-57488	
MATERIAL	FINISH	APPLICATION SPEC	SIZE A3
		WEIGHT 0	CAGE CODE 00779
		CUSTOMER DRAWING	DRAWING NO G=1775014
			RESTRICTED TO
			SCALE 7:1
			SHEET 2 OF 2
			REV G1